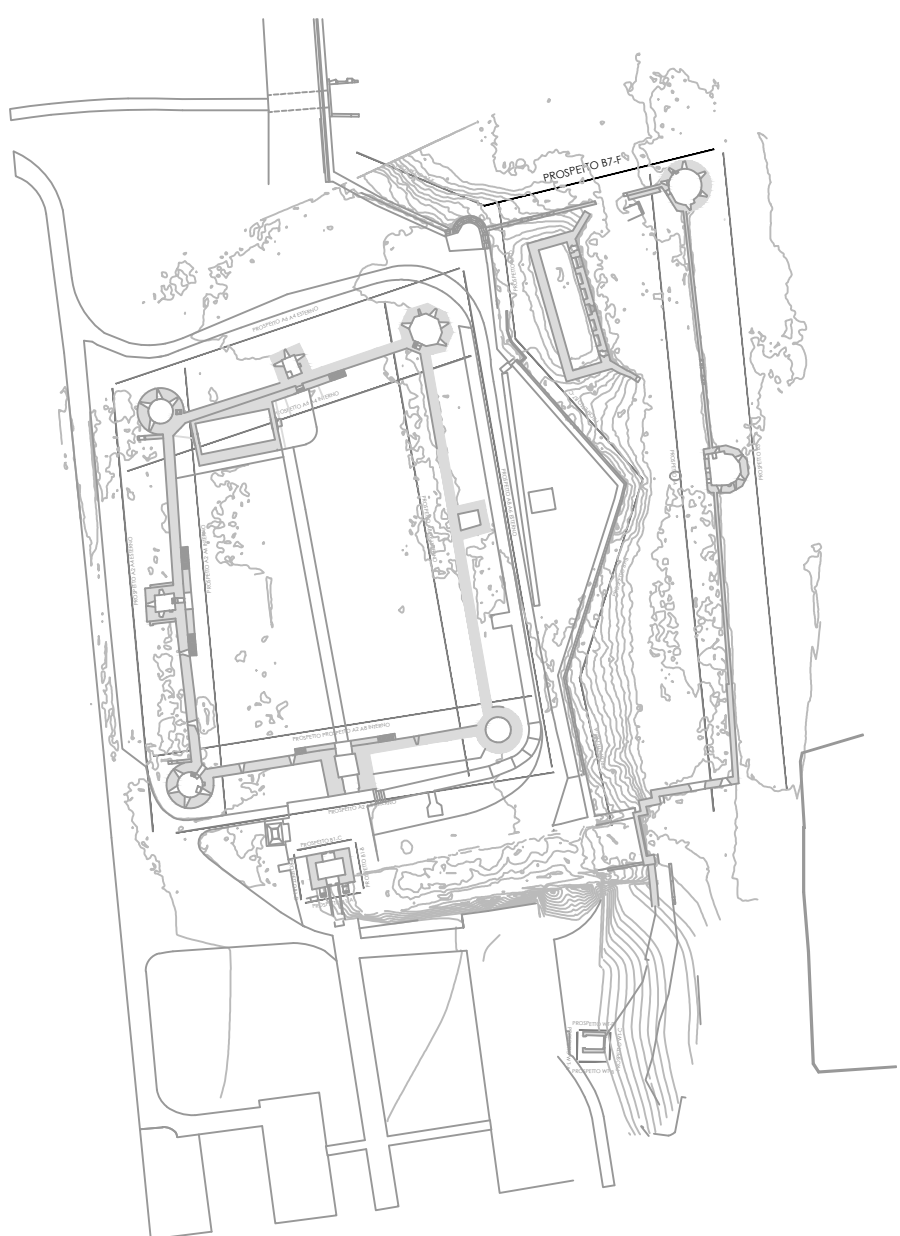
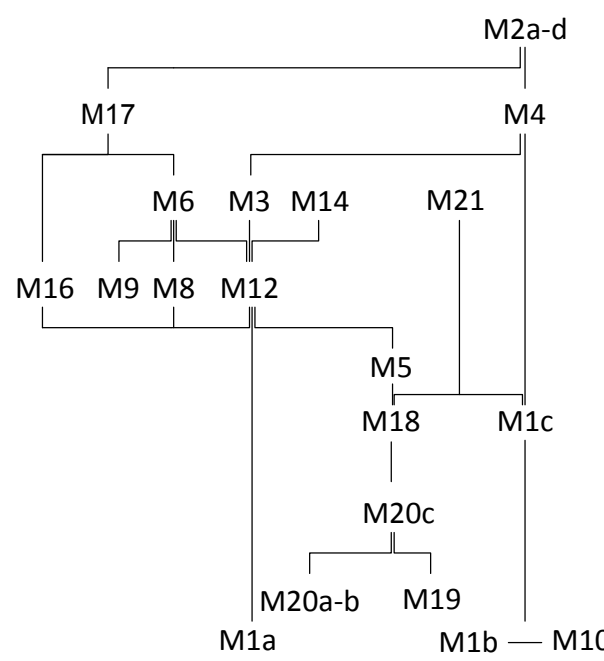



FRONT B7-F - LOWER FORTRESS


M1a	M2d	M9	M16	M20c
M1b	M3	M10	M17	M21
M1c	M4	M11	M18	M22
M2a	M5	M12	M19	
M2b	M6	M14	M20a	
M2c	M8	M15	M20b	

HARRIS MATRIX





This project is funded by the European Union




European Union Confidence Building Measures Programme  
Regional Local Engineer "Moldova Development Programme"  
"Proiectul de Dezvoltare Locală 'Moldova Development Programme'"

**CLIENT:** European Union Delegation to Moldova through its operational contractor UNDP

**Technical Expertise and develop Detailed Technical Design for CONSERVATION AND RESTORATION WORKS OF BENDER FORTRESS (Phase I)**

**DETAILED TECHNICAL DESIGN**



**TEAM LEADER**  
Studio Berlucchi srl  
Arch. Eng. Nicola Berlucchi - Eng. Nicola Fumagalli  
with the collaboration of  
Arch. Flavio Montardi, Eng. Alessandra Trevisi  
www.studioberlucchi.it

**INTERNATIONAL EXPERTS**

Prof. Donatella Fiorani  
Conservation expert

Prof. Carlo Blasi  
Structure restoration expert

**LOCAL EXPERTS**

Arch. Serghei Garconita  
Certified local Architect  
since 2017 # number 3008

Eng. Stanislav Condratenco  
Certified local Engineer  
since 2018 # number 088

Arch. Corina Fisticanu  
Assistant local Architect

Eng. Evgheni Cutia  
Assistant local Engineer

Dr. Sergiu Musteata  
Archaeologist

Dr. Igor Nicoara  
Geologist

Arch. Carlotta Cocco  
GBC MB Expert

C			
B			
A			
+	07-2020	first emission	C226_REM_006.dwg
-	DATE	REVISION	FILE NAME


TITLE:		ASSIGN CODE		DOCUMENT CODE	
MASONRY ANALYSIS		C226		R EM 006	
Distribution: lower fortress		- R		EM 006 -	

REPRESENTATION SCALE: 1:100

INTERNAL CODE: C226\_REM\_06 in of Technical Expertise

EXPERT STAMP AND SIGNATURE:

This project is funded by the European Union  
European Union Confidence Building Measures Programme  
Regional Local Engineer "Moldova Development Programme"



Engagement for  
Sustainable Development